



## Parabolic Probes of Well-defined Geometry

Parabolic AFM probes of well-defined geometry are a must for quantitative measurements of the mechanics of polymers and biological samples.

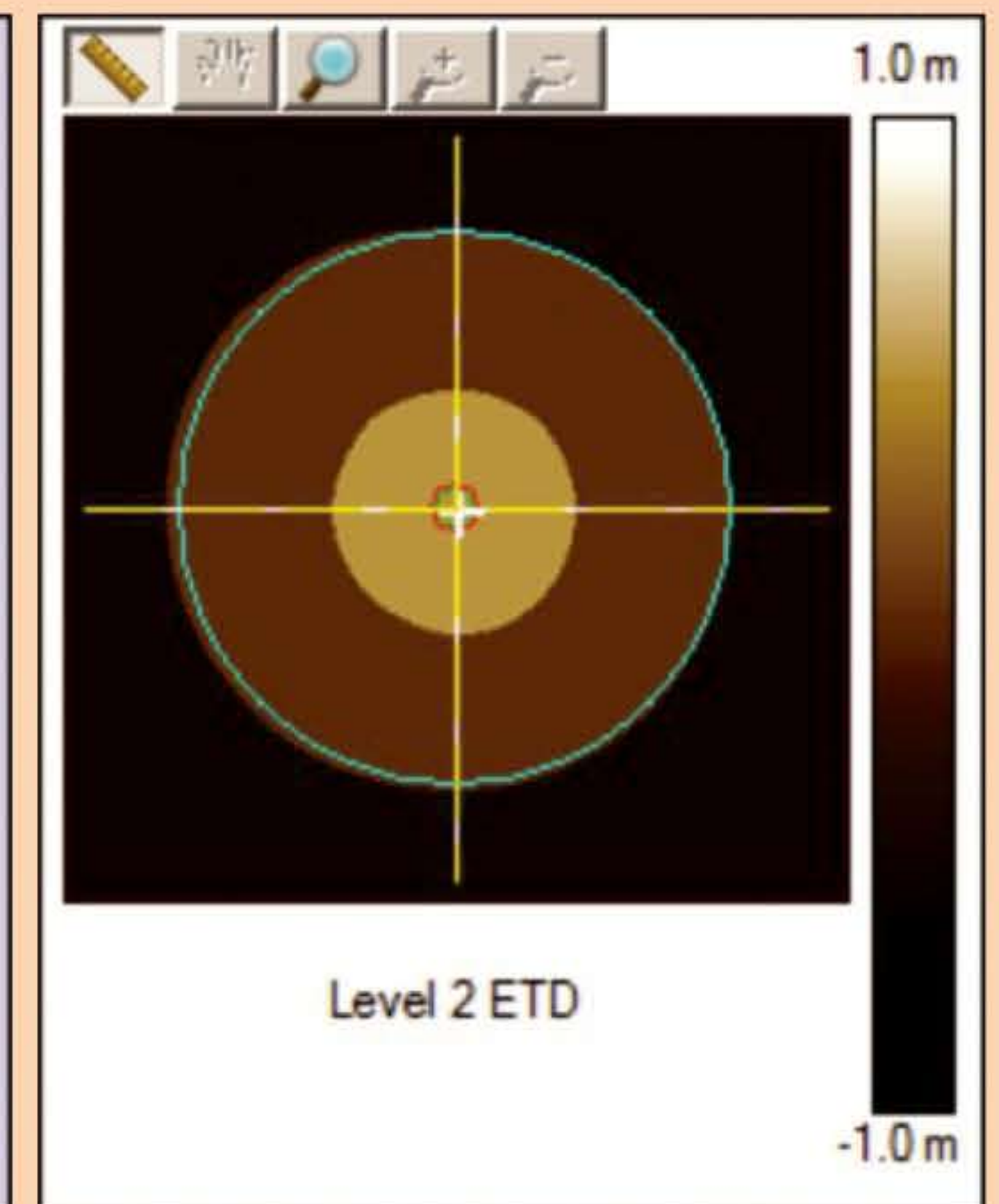
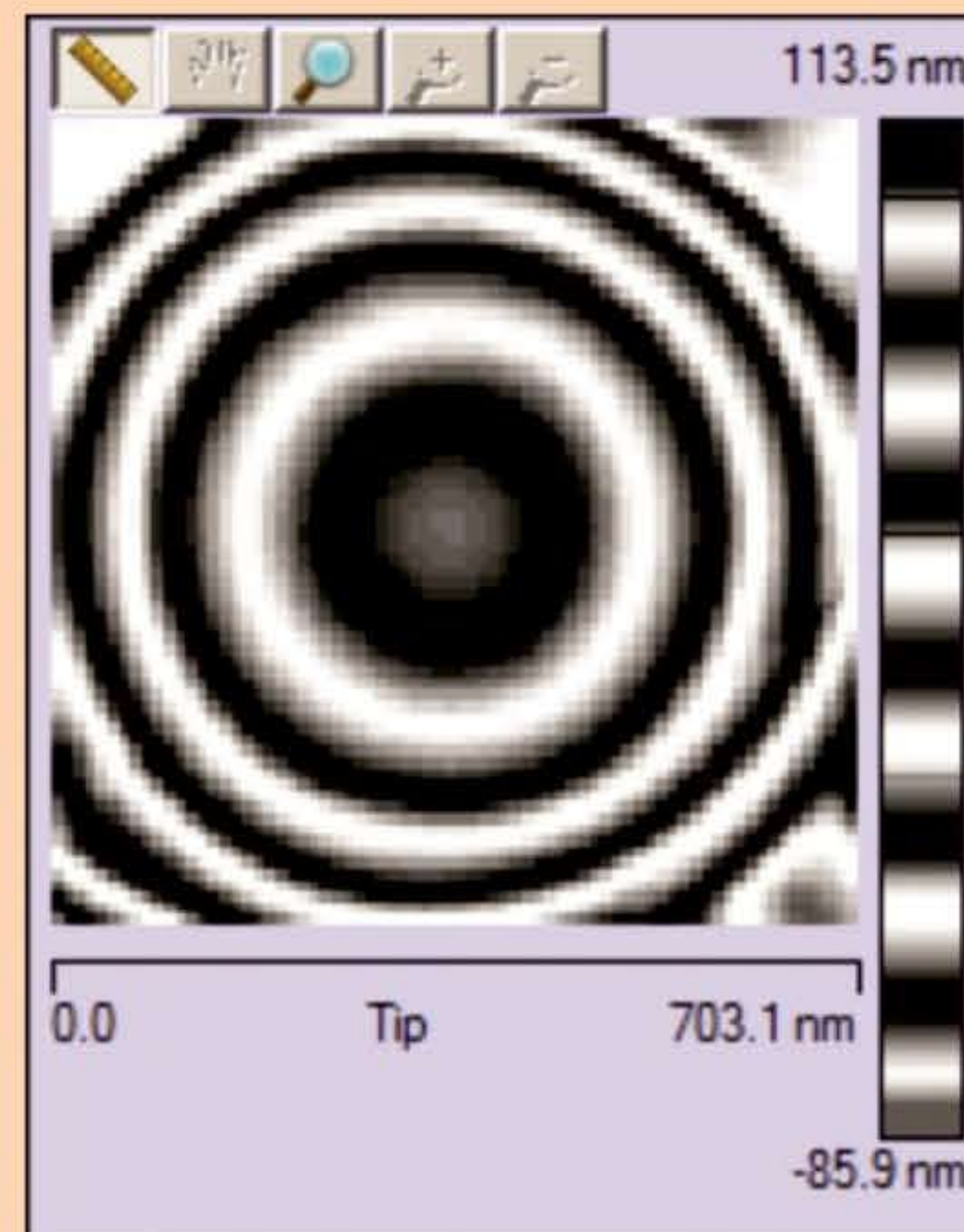
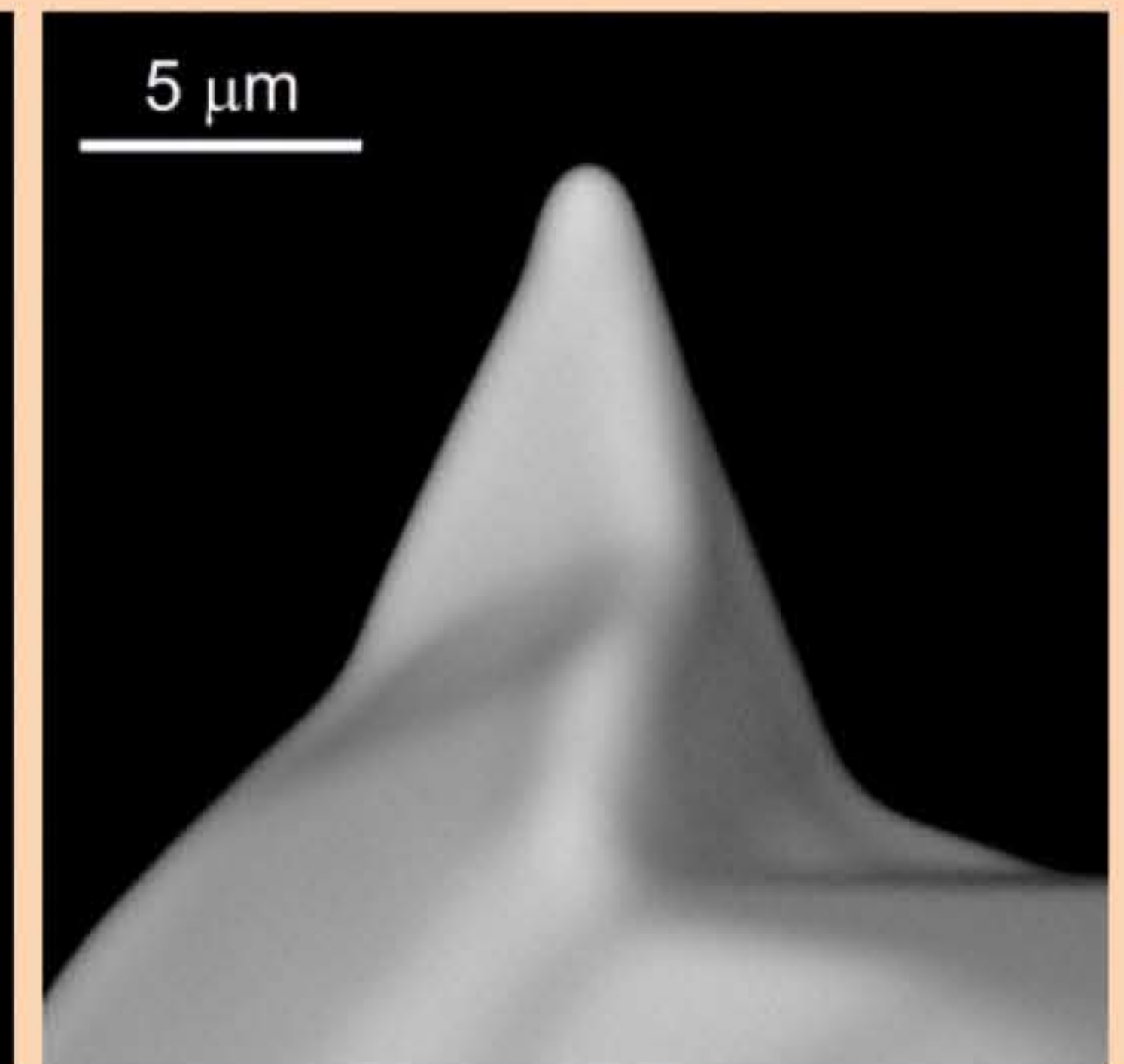
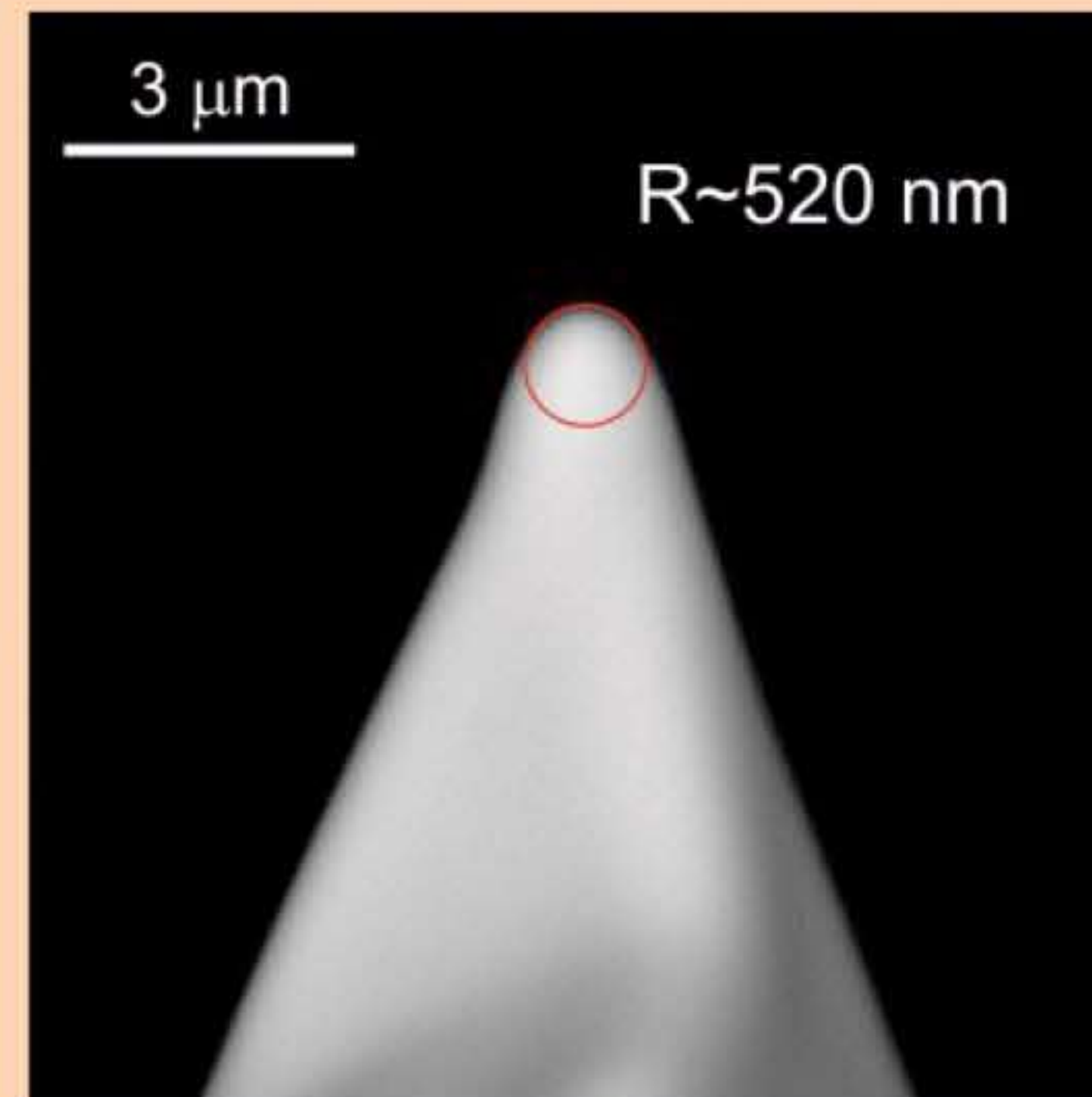
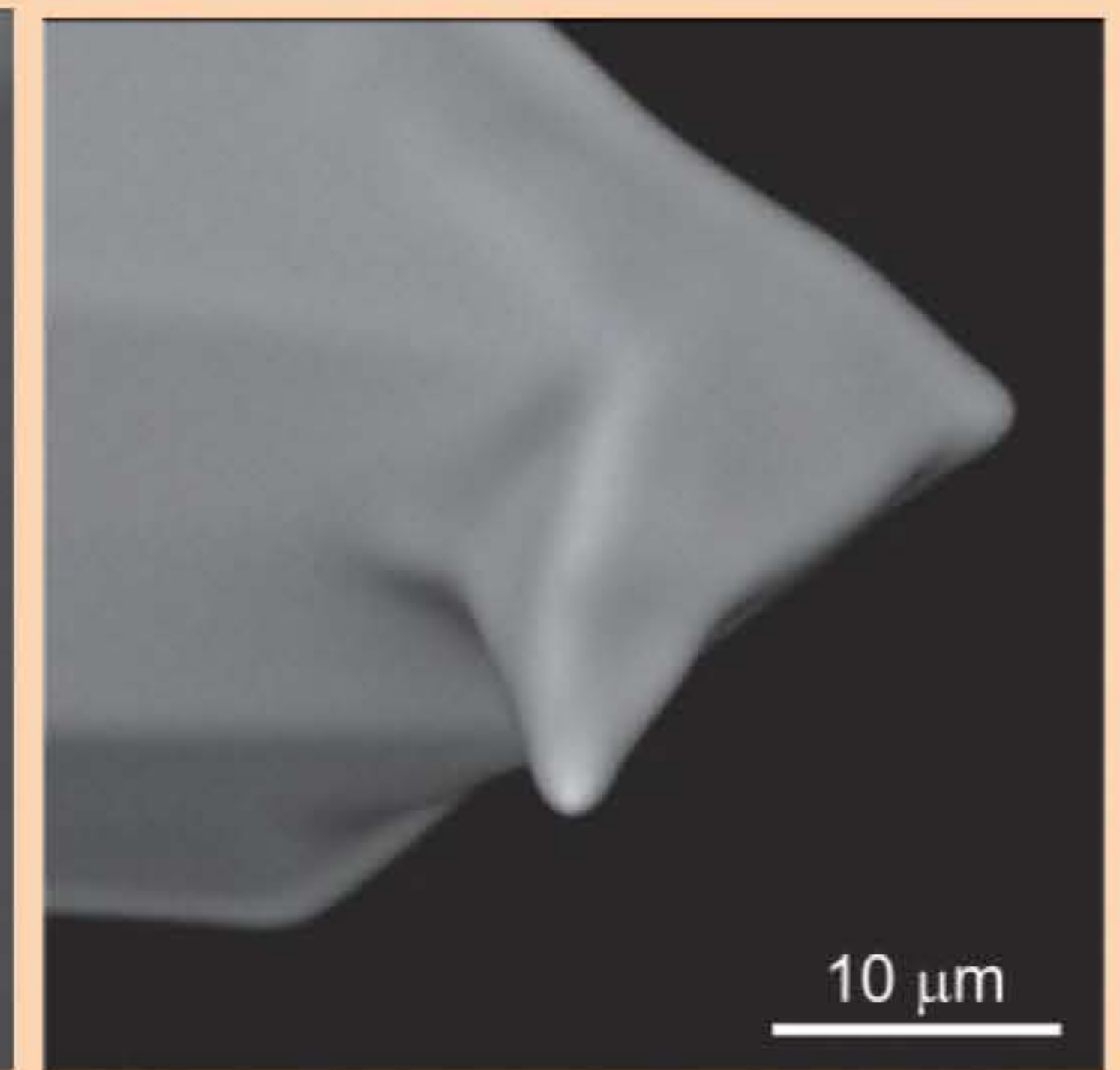
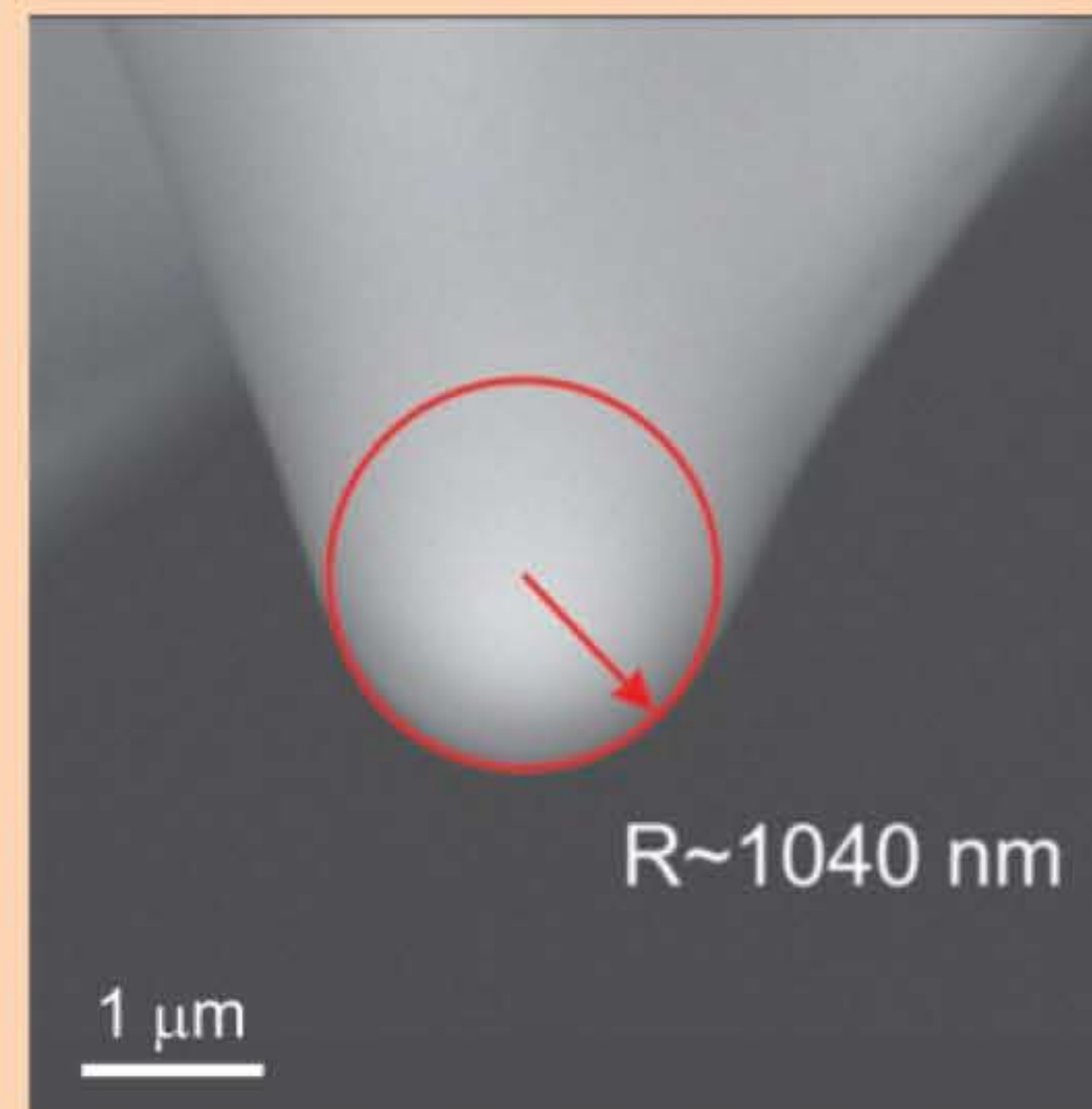
Our proprietary process delivers AFM probes with parabolic shapes of various radii. These probes are very durable and do not degrade even when used on such challenging samples as titania flakes (tip-check samples).

Available probe radii: 50-1100 nm.

Available spring constants: 1-50 N/m.

Available cantilever length: 125 and 225  $\mu\text{m}$

NSS' probes are manufactured within the above parameters according to customer specifications.



### Contact Information

NanoScience Solutions  
4601 Fairfax Drive, Suite 1200  
Arlington, VA 22203  
tel. (800) 292-4929

[info@afm-nss.com](mailto:info@afm-nss.com)

<http://www.afm-nss.com>